



Communication &
Business Institute
The Leading Graduate School of Communication & Business

LSPR COMMUNICATION & BUSINESS INSTITUTE

Jakarta - Bekasi - Bali

International Students Handbook
2022

Welcome to

LSPR Communication & Business Institute, Jakarta

Dear Students,

On behalf of London School of Public Relations Jakarta (LSPR), I would like to extend a sincere and warm welcome to you. We are delighted that you have chosen LSPR to continue your education and know that you will benefit great both academically and personally, from your stay with us. The LSPR Community looks forward to the intellectual and cultural contributions that you will give and share to LSPR and in return, we will do everything possible to make your stay most memorable and rewarding.

This booklet has been produced by the International Relations Department in LSPR with a view to assist you in your preparation during your period of stay. We have endeavored to provide you information and to touch on many aspects of importance to your stay in Jakarta, Indonesia. Should you need any further information or simply wish to discuss any concerns & difficulties you may be experiencing, please feel free to visit us at the International Relations & Partnership Office at LSPR Sudirman Park.

I wish you a successful and enjoyable stay at LSPR!



Candy Hernandez, B.Sn, M.Si

About

LSPR **COMMUNICATION & BUSINESS INSTITUTE**

LSPR Communication and Business Institute established in 1992, offers Bachelor's and Master's Degree programmes as well as an E-learning programme in the fields of Communication and Business Studies. The institute is committed to produce top quality and highly skilled communication graduates. Since 2002, LSPR has been accredited "A" for its Undergraduate Programme in Communication Studies and in 2015 was the first private university to receive 'A' accreditation for its Postgraduate Programme in Communication from Badan Akreditasi Nasional Perguruan Tinggi (BAN PT, The National Accreditation Body of Higher Education in Indonesia).

In 2016 as an award winning graduate school of communication, LSPR received recognition as the "Best Graduate School of Communication" from Indonesian Media and has produced 20,000 alumni up to and including 2019.

LSPR is proud to be the leader in the field of communication education in Jakarta. With its proactive initiatives to create a fun learning environment and research structure as well as recognizing the needs of the next generation.





1. The Leading Graduate School of Communication & Business
2. Premium Education Institution with Affordable Fees
3. Multicultural Environment
4. The First Inclusive (Special Need Studies) Higher Education Institute in Indonesia
5. Fun Learning and Enjoyable Study Experience
6. Creative and Dynamic Ambiance
7. Centre for ASEAN Public Relations Studies
8. Centre for ASEAN Autism Studies
9. Initiator and Headquarters of ASEAN Public Relations Network
10. Centre for ASEAN Creativepreneur Studies
11. Global Alliance for Public Relations & Communication Management Asia Pacific Regional Office – Jakarta Hub
12. The institution that prepares students to be competent in their chosen field by equipping students with Knowledge, Skills and the Right Attitude

THE MANAGEMENT

Prita Kemal Gani, MBA, MCIPR, APR	-	CEO & Founder LSPR
Dr. Andre Ikhsano	-	Rector
Dr. Janette M Pinariya	-	Vice Rector I
Alppy Valdez, MMC	-	Vice Rector II
Taufan Teguh Akbari, M.Si	-	Vice Rector III
Dr Lestari Nurhajati	-	Vice Rector IV
Dr. Rino Febri Boer	-	Director of Postgraduate Program
Mikhael Yulius Cobis, M.Si, M.M	-	Dean of Communication Faculty
Yuliana R. Prasetyawati, M.M	-	Dean of Business Faculty
Gesille Sedra Buot Zambrano, MBA	-	Director of LSPR Bali

****Each student on International Study Program will be provided with a “student buddy”. Please contact the International Office for details.***

INTERNATIONAL RELATIONS & PARTNERSHIP OFFICE



Name	Designation	Email
Candy Hernandez, M.Si	Director	candy.t@lspr.edu
Nadine Samala, M.A.	Deputy Head of International Relations and Partnership Office	nadine.s@lspr.edu
Adinda Ayu Sasqia Putri	International Relations Coordinator for Study Tour and Workshop	adinda.asp@lspr.edu
Heidy Isabel	International Relations Coordinator for International Academic Study Program and Partnerships Collaboration	heidy.i@lspr.edu
Alma Zachri	International Office Coordinator for Partnership	almaida.r@lspr.edu
Aurelia Maria Indri Rooselinda	Digital Marketing – International Relations and Partnership Office	aurelia.mir@lspr.edu

LSPR CAMPUSES

Jakarta - Bekasi - Bali



LSPR Sudirman Park

Jl. K.H. Mas Mansyur Kav. 35
Jakarta Pusat 10220, Indonesia



LSPR Trans Park Juanda

Jl. Ir. H. Juanda
Duren Jaya, Bekasi Timur, Indonesia



Prof. Dr. Djajusman Auditorium & Performance Hall



Drama Room



Computer Lab



Research Centre



Multimedia Suite



Broadcast TV Studio

LSPR CAMPUSES

Jakarta - Bekasi - Bali



LSPR Bali

Jl. Raya Puputan
No.140, Sumerta
Kelod, Kec. Denpasar
Timur, Kota Denpasar,
Bali 80234

FACULTY OF COMMUNICATION

"To be a communication faculty role model in the development and application of communication in Indonesia and recognized Internationally"

Communication Programme:

- Public Relations & Digital Communication
- International Relations Communication
- Marketing Communication
- Performing Arts Communication
- Broadcasting & Digital Media Communication

Visual Communication Design:

- Film, Videography & Photography
- Digital Graphic Design Communication



FACULTY OF BUSINESS

"To be a role model of faculty of business in the development and application of business in Indonesia and recognized Internationally"

Management

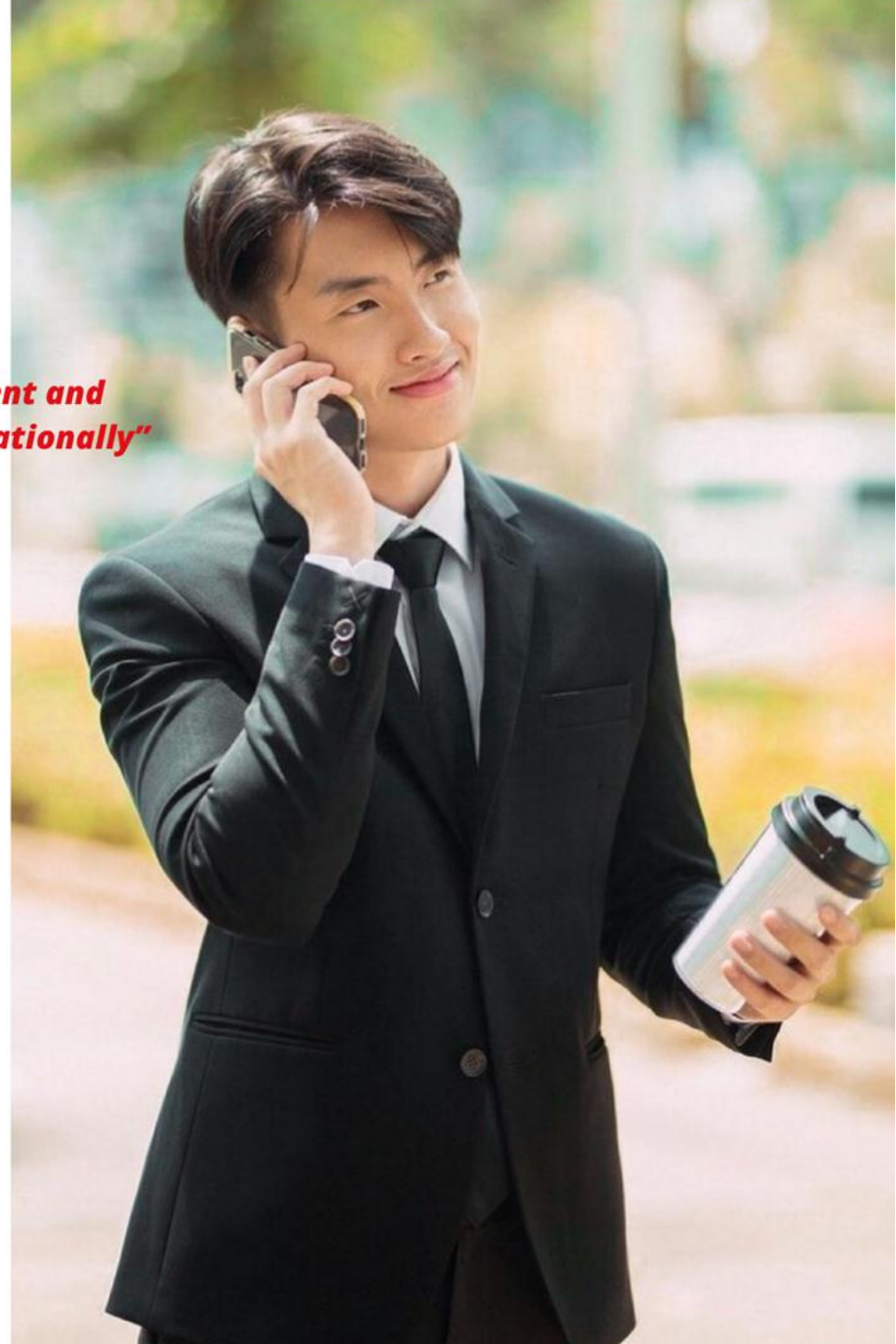
- Entrepreneurship & Leadership
- Digital Business Management

Tourism

- Hospitality & Tourism Business

Event Business Management

- Business Event & Enterprise





Communication &
Business Institute
Bali

The Leading Graduate School of Communication & Business

LSPR
BALI



- Undergraduate Blended Learning
- Undergraduate E-Learning
- One Year Vocational - Public Relations & Digital Communication

"After all, This is Bali guys. But your education still No.1"

**If you wish to study in Bali, You still need to go to
Jakarta first to settle down your KITAS**

ACADEMIC CALENDAR & GRADING SYSTEM

EVEN SEMESTER 2022	
Start of classes	14 March 2022
End of classes	20 July 2022
Mid Semester Exam	17 – 31 May 2022
Final Exam	25 July – 5 August 2022

- ***Dates stated may still change without prior notice. Final and detailed Academic calendar will be given during the orientation day.***
- ***Students are allowed to add and drop subjects or classes only during the first two weeks of semester.***
- **Exchange students are not allowed to take final exams earlier than the first two weeks of the exam period.**
- **Students who have absences more than 4 times will not be eligible to take the final exam.**

LSPR Grading Composition Grading System

A	90 - 100
A -	85 - <90
B +	80 - <85
B	75 - <80
B -	70 - <75
C +	65 - <70
C	60 - <65
C -	50 - <60
D and E	< than 50

CAMPUS DRESS CODE

CAMPUS DRESS CODE

The following are
STRICTLY PROHIBITED !!



Mini Skirt



Jeans Mini Skirt



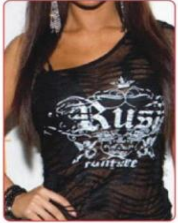
Low Cleavage



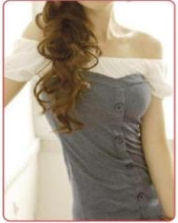
Transparent Legging



Hipsters



Transparent Clothes



Off The Shoulder Clothes



Backless Clothes



Sleeveless T-shirt



Piercing



Sleeveless T-shirt



No Tatto Exposed



Sensitive Picture



Sensitive Wording



Torn Jeans for Male



Torn Jeans for Female



Cut Offs



Strapless Sandals



Slippers and Sandals



- Blazer is highly suggested
- Printed pattern skirt is acceptable. For as long as the length of the skirt reach the knee level
- Printed pattern are not acceptable for pants
- Formal leather shoes (high heels) are highly suggested, with minimum height of 3 cm



- Inappropriately sheer, loose or low-cut clothing that bares or exposes the stomach, back, breast, buttocks or genitalia are not acceptable. (For example, the following items are prohibited under this section: garments made of fishnet, mesh, or similar see-through material)
- Printed or studded flat shoes are not acceptable



- Formal body contouring dress is acceptable, the sleeve must be long-length, and the skirt must be at the knee-level. Low necklines are not permitted
- Appropriate using of accessories is acceptable (necklace, earring, ring, bracelet)
- Appropriate working flat shoes are acceptable



- Super short sleeve are not acceptable, sleeve must be in the appropriate length
- Casual flat shoes are not acceptable
- The over-using of accessories are not suggested

CAMPUS DRESS CODE



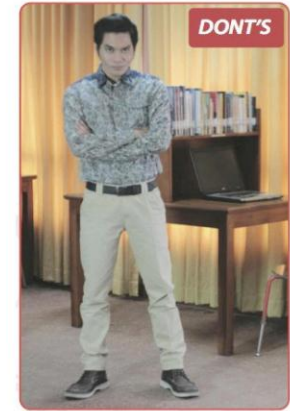
- Colorful professional clothing is acceptable. Subdued color (soft color) is suggested
- The clothing must be fit properly, and not be more than one size larger than the student's body size
- Formal wedges are acceptable



- Any kind of see-through garment is not acceptable
- No hat, cap or headscarf worn inside of the campus, except for religious purpose
- No colored pants, jeggings or jeans allowed, the only acceptable colors are only black, dark blue, dark brown, khakis and grey
- Printed or studded wedges are not acceptable



- Blazer and tie are highly suggested
- The shirt must be fit properly. Plaids and stripes are only pattern other than that is prohibited
- Business pants and leather belt are compulsory. The pants must be fit properly, and mid length (3/4 pants) are not acceptable
- Formal leather shoes are highly suggested



- Any kind of patterned shirt are not acceptable. Except Batik that could be worn only on Friday
- Casual shoes, boots or athletic shoes are prohibited



- Vest or cardigan could be the option for the outer-wear
- Business pants are acceptable. The pants must fit properly, and mid length (3/4 pants) are not acceptable



- Any kind of sleeveless blouse is not acceptable
- No leggings, jeggings or leather pants allowed in the campus
- No colored pants allowed, only black, dark blue, dark brown, khakis and grey
- No boots or athletic shoes are acceptable



- Sweater or cardigan could be the options for the outer-wear
- The using of solid colored sweater or cardigan for male students are acceptable. No patterns are allowed
- As for the color of the pants, Black, Dark Blue, Dark Brown, Khakis and Grey are the only options



- Patterned outer wear (jacket, vest, sweater, etc) is prohibited
- No colored pants, training pants, jeggings, cropped, cargo, patterned bottoms, shorts, or jeans allowed in the campus

CAMPUS DRESS CODE



- Long-sleeved shirt is highly suggested, formal short-sleeved is acceptable
- The using of proper accessories for male students (watch, bracelet, ring) for male students are acceptable
- As for the color of the pants, black, dark blue, dark brown, khakis and grey are the only options



- Rolled-up short sleeve for shirt is prohibited
- No ripped clothing (tops and bottom) or leather pants are acceptable allowed in the campus
- Casual shoes are prohibited
- The using of unnecessary accessories are not highly suggested
- No revealing of the socks or any kind of undergarment



- Vest or cardigan could be the option for the outer-wear
- The using of solid colored shirt for male students are acceptable
- As for the color of the pants, black, dark blue, dark brown, khakis and grey are the only options



- Patterned outer wear (jacket, vest, sweater, etc) is prohibited
- No jeans, skinny jeans (even if the color is black), jeggings, cargo pants, shorts or leather pants allowed in the campus
- Casual shoes are prohibited



DISCOVER YOURSELF

LSPR STUDENT LEAGUE

The LSPR Centre for Excellence in English provides Academic and Business English (Year 1 & 2) and extracurricular (Year 1 to 4) English activities to LSPR students during their communication studies.

For ease of access, the LSPR Centre for “Excellence in English” is located in Sudirman Business Park and has experienced and qualified Native English teachers.

Our English certification of 12 levels is from internationally and locally recognized examination providers.

With classes of 16-20 students in a comfortable learning environment, you will find it easy to make friends and experience college life.

LSPR CLUBS

- LSPR Adventure Club
- LSPR Advertising Society Club
- LSPR Basketball Club
- LSPR Cares Club
- LSPR Climate Change Champions Club (4C)
- LSPR Dance Club
- LSPR English Club
- LSPR Gaming
- LSPR KMB Pramudita Club
- LSPR Band Club
- LSPR Martial Arts Club
- LSPR Modeling Club
- LSPR News Club
- LSPR Federation of Muslim Students (FOMS)
- LSPR Photography Club
- LSPR Teatro
- LSPR Public Speaking Club
- LSPR TV
- LSPR Youth Diplomacy Community
- LSPR Hockey Club
- Mr & Ms LSPR
- LSPR Cheerleaders Club
- LSPR Choir
- LSPG Christian
- LSPG Catholic
- LSPR Futsal Club
- LSPR Radio
- LSPR Rotaract



COST OF LIVING

Details	Cost in Indonesian Rupiah
Rent: Shared Apartment (for 2 persons)	8,000,000 – 10,000,000 per month
Electricity/ Water (depends on usage)	700,000 – 1,000,000 per month
Food Around Campus (simple meal) Fine Dining + Beverages	100,000 (lunch & dinner per day) 250,000 – 300,000 (per outing)
Laundry	10,000 – 12,000 /kilogram
Transportation Busway (near Campus) Taxi – Blue Bird (Preferred)	3,500 (per trip, have to buy the cards for Rp 40,000 with Rp 20,000 credits) Starts with 7,500
Internet	100,000 – 450,000 (depends on package/provider)
Mobile Sim Card	20,000 Voucher denominations: 25,000, 50,000, 100,000

We are often asked, particularly by international applicants, to give some indication of the cost of living in Jakarta, Indonesia. This is quite a difficult exercise, **as the cost of living depends to some extent on each individual student.**

For example, spending on travel and social life can vary widely from student to student. Therefore, **the following costs are only approximate estimates of monthly living expenses of a student** living away from and at home during the exchange. Please note, **these are approximate costs and will vary for individual students.**

Option 1:

Rented Rooms with bed + cabinet + toilet (Indonesian term is “kost”)

Location: 10min walk to LSPR

Cost: Rp5-7 million /month/room (USD400-USD550)

Security deposit: up to 1 month rental fee (will be given back a month after the rental agreement is over)

Additional Cost: Electricity and Water (depending on usage)

Payment Method: The total rental cost for 6 months and deposit need to be paid in advance for most of available accommodation units. Please kindly note that accommodation unit with monthly payment or once in three months payment is rarely available and would usually cost more.

Option 2:

Semi Furnished Apartment with 2 rooms (Sudirman Park)

Location: Beside LSPR

Cost: Rp 8 - 10 million/month (USD600-USD800)

Deposit: up to 1 month rental fee (will be given back a month after the rental agreement is over)

Additional Cost: Electricity and Water (depending on usage)

Payment Method System: The total rental cost for 6 months and deposit need to be paid in advance for most of available accommodation units. Please kindly note that accommodation unit with monthly payment or once in three months payment is rarely available and would usually cost more.

Semi Furnished Apartment

ACCOMODATION



Room 1



Lounge Area



Kitchen & Dining Area



Room 2

Not in photo:
Toilet Room
with Washing
machine &
small terrace

Fully Furnished Apartment

ACCOMODATION



Lounge Area



Kitchen & Dining Area



Room 1



Toilet

Not in photo:
Room 2 with
1 single bed &
small terrace

Sudirman Park Apartment Facilities



Not in photo:
2 Convenient Stores,
FamilyMart, Mini Mart,
Coffee Shop, Japanese
and Indonesian
Restaurants, Laundry
services, 24-hr security,
Carpark

IMMIGRATION RULES



To process the student visa, the following are the set of documents which need to be provided to LSPR:

- Passport Scanned copy
- CV
- Insurance Copies (valid & covered in Indonesia)
- Transcript (Semester 1 – current)
- Photographs 4x6 (4pcs)
- Credit Transfer System / Learning Agreement
- Letter of Confirmation
- Copy of Latest Academic Transcript
- Recommendation Letter from Indonesian Embassy in your country to Immigration Office, Jakarta for study (student exchange) at LSPR Jakarta
- Statement Letter: not to be undergone of working
- Statement Letter: Willing to obey the rules and regulations
- Statement Letter: Funding sources
- Medical Statement

IMMIGRATION RULES

Particulars	
Validity Period	6 months
Fee + administration fee, including: <ul style="list-style-type: none">• Recommendation letter by Ministry of Education• Clearing House letter• VITAS• KITAS• Local Police Registration• Population Registration Certificate• Multiple Re-Entry• EPO (Exit Permit)	To be confirm
Process Time	2-3 months

On completion of processing the student visa from Indonesia, a copy of the telex will be sent to you and to the Indonesian Embassy in your country. You will need to submit your passports and telex copy to the Indonesian Embassy to obtain the visa on your passport. For other documentations for the said process, kindly contact the Indonesian embassy in your home country.

IMMIGRATION RULES

REGULATIONS DURING THE PANDEMIC COVID-19 FOR INTERNATIONAL ARRIVAL

1. All foreign who come in to Indonesia need to be **fully vaccinated**

- If you not yet fully vaccinated you will be vaccinated once you arrive in the quarantine place in Indonesia
- If you not yet fully vaccinated due the medical reason, you need to attached the letter of confirmation from your respective hospital

2. All foreign will be **tested PCR** once they arrived in the quarantine and need to **be quarantine for 8 days** in the respective hotels from the government (list attached) and tested PCR in their 7th day of their quarantine

- Estimated cost for Quarantine Hotel: 5.000.000 IDR - 7.500.000 IDR (inclusion: 2 times PCR, Daily Breakfast, Lunch, Dinner, One-way transportation from the airport)

GENERAL INFORMATION



Time Zones

Indonesia has three time zones—Western Indonesia Time which is GMT +7 (covering Sumatra, Java, Madura, West Kalimantan, Central Kalimantan), Central Indonesia Time which is GMT +8 (covering East and South Kalimantan, Sulawesi, Bali, Nusa Tenggara) and the last is Eastern Indonesia Time which is GMT +9 (covering Maluku and Irian Jaya).

The capital Jakarta is GMT + 7 or 16 hours ahead of US Pacific Standard Time.

Office Hours

Office hours start from 8 AM to 4 PM, or 9 AM to 5 PM. Lunch break occurs between 12 noon to 1 PM. Usually offices are closed on Saturdays, including government offices.

Government office hours start at 8 AM and end at 4 PM.



Banking Hours

Standard banking hours are from 8 AM to 3 PM from Monday to Friday. However several banks open their branches in hotels (and some in malls) longer than office hour, a few are open on Saturdays so you might want to check first. Jakarta has a number of international banks, even though you can also exchange currencies in some hotel cashiers and official money changers.

GENERAL INFORMATION



Currency

The Indonesia Rupiah is also called IDR. Information of daily exchange rate can be found in newspapers or from the net. Some Indonesia banks provide this on their websites. IDR and US\$ are the most acceptable currencies.

Most tourism resorts have money changer facilities. When you are traveling to remote areas it is advisable to exchange your money and clear your check. Credit cards are only acceptable in big hotels, restaurants, shops and traveling agencies.

Exchange rate (per November 2021)*:

1 USD	= 14,400 IDR
1 EUR	= 16,600 IDR
1 KRW	= 12,13 IDR
1 MYR	= 3,500 IDR
1 MOP	= 1,800 IDR

1 DKK	= 2, 235 IDR
1 CHF	= 15,717 IDR
1 HUF	= 46.26 IDR
1 RUB	= 200 IDR



Electricity

Electric power supply is 220 volts in all regions. So be careful with your 110-volt electronic equipment. The sockets will only fit with with two pins rounded-tip plugs (technically known as Type C, E, and F) or use adaptors. Most hotels and many restaurants in large cities provide internet connections or free WiFi

Do's and Dont's

Indonesia has several traditions and customs and it is best if you know them beforehand. Some of them are:

- Even though hand shaking is deemed appropriate between men and women, bear in mind that a number of Muslim women prefer to introduce themselves to men by nodding their head, smiling, and clasping their hands without any physical contact.
- Traditionally, when you greet someone, both hands are used when shaking, without grasping.
- It is considered polite to make a phone call first before visiting.
- Shoes must be taken off before entering a house or place of worship like mosques.
- Usually drinks are offered to guests. It is polite to accept.
- When eating, receiving or giving something, always use your right hand. Right index finger should not be used to point a place, items or people. Use the right hand thumb and fold the remaining fingers to be more polite.
- Taking photographs of houses of worships is allowed, however permission should be asked first whenever possible, especially if you want to take pictures of the interior.
- Most Indonesian Muslims do not consume alcoholic drinks and pork.
- Hence, the tradition of proposing a toast to honor someone is not generally known.

Travel Tips

- Plan your budget and choose your destination carefully. Indonesia is vast—each region has its own quirks and possibilities. For instance, if you plan to have some adventure in rugged terrains, it's advisable to come on dry season for rains might make your paths muddy.
- Make sure you find as many information as possible concerning Indonesia, especially about the visa.
- Have sufficient cash ready, usually US\$ is preferred. It can easily be exchanged in airports, hotels, banks or reputable money changers. Customs might ask you to show how much money you bring.
- Dress sufficiently. If you are female, make sure you dress accordingly. Skimpy clothing in public area, save from beaches and pools, might warrant unwanted attention.

GENERAL INFORMATION

A. Indonesian Phrases

Bahasa Indonesia is relatively simple and by using a few phrases or sentences, you'll be more appreciated and respected. You can find Indonesian phrase books in good book shops. But these few pointers below can help. Try slipping a few of them in daily conversations and ask whether you get it right. It'll be a great ice-breaker.

English

How do you do?

Good morning

Good afternoon

Goodbye

Bon voyage

Fine

Welcome

Indonesia

Apa kabar?

Selamat pagi

Selamat siang

Selamat tinggal

Selamat jalan

Baik

Selamat datang

Personal Pronoun & Title

I

You

We

He/ She

They

Mr.

Miss

Mrs

Saya

Kamu/Anda

Kami

Ia/Dia (both are genderless)

Mereka

Tuan

Nona

Nyonya

GENERAL INFORMATION

Questions

Can you help me?

How do I get there?

How far?

How long will it make?

How much (price)?

What is this/that?

What is your name?

When?

Where?

Why?

Dapatkah Anda membantu/ menolong saya?

Bagaimana cara untuk ke sana?

Seberapa jauh?

Seberapa lama?

Berapa harganya?

Apa ini/ itu?

Siapa nama Anda?

Kapan?

Di mana?

Kenapa/ mengapa?

Direction

Go up

Go down

Turn

Right

Left

Front

Naik

Turun

Berputar

Kanan

Kiri

Depan

Mobile Phone Provider

- [simPATI](#) by [Telkomsel](#)
- [Kartu AS](#) by [Telkomsel](#)
- [Mentari](#) by [Indosat](#)
- [IM3](#) by [Indosat](#)
- [XL](#) by [XL](#)
- [Axis](#) by [XL](#)
- [Tri](#) by [Hutchison Three](#)

GENERAL INFORMATION

Problems on the Toll Roads

General Toll Road Information	801-1735
Jaya Cawang Grogol Airport	082-198-1166
Jaya Cawang Priok Pluit	430-0601 psw. 151
Jaya Cikunir Cakung	082-198-1196
Jaya V Pd. Pinang Kp. Rambutan	082-198-1169
Jaya/Man/Bagorarawi Cikampek	
Tangerang	798-702
PT. Basa Marga	801-735 800-7736 08-002-1997

Jakarta Pusat

Fire Department	384-1216 344-1494
Flood Control	384-6608 380-3302
RS. Cipto Mangunkusumo	330-3808 337-2507
RS. Cikini DGI	336-961 310-7792
RS. ST. Carolus	390-3441
RS. Islam Jakarta	424-3308

Other Important Emergency Numbers

Jakarta DKI Jaya	113
Report Phone Outage/Repairs	117
Postal Information	161
PLN Electricity Repairs	123
HIV/AIDS Information	163
Natural Disasters	129
Ambulance	118

Emergency Numbers in Jakarta

Below are listings for police, fire, flood control, hospitals and other important emergency phone numbers in Jakarta.

Fire - 113

Police - 110

Ambulance - 118

National Police HQ 021-721-8006

Flood Centre 021- 819-6945

Blue Bird Taxi – 021-794-1234 / 021-7917-1234

GENERAL INFORMATION

Grocery Purchase:

- Carrefour, ITC Kuningan (10 minutes by taxi)
- Papaya – Citywalk Sudirman (3 minutes walk)
- Giant Supermarket – Plaza Semanggi (15 minutes taxi)
- Ranch Market – Grand Indonesia
- Lotte Mart – Kuningan City (10 minutes by taxi)
- Hypermart – Thamrin City (15 minutes by taxi)

Restaurants inside Sudirman Park:

- Saji
- Loka Padang
- Café Masilia
- The Lucy's
- Sederhana



Citywalk Sudirman Ground Floor 9,
Jl. K.H. Mas Mansyur, RT.10/RW.11,
Karet Tengsin, Daerah Khusus Ibukota Jakarta 10220

LSPR STUDENT EXCHANGE

#LSPRExploresTheWorld

Your International Journey Starts Here at LSPR!



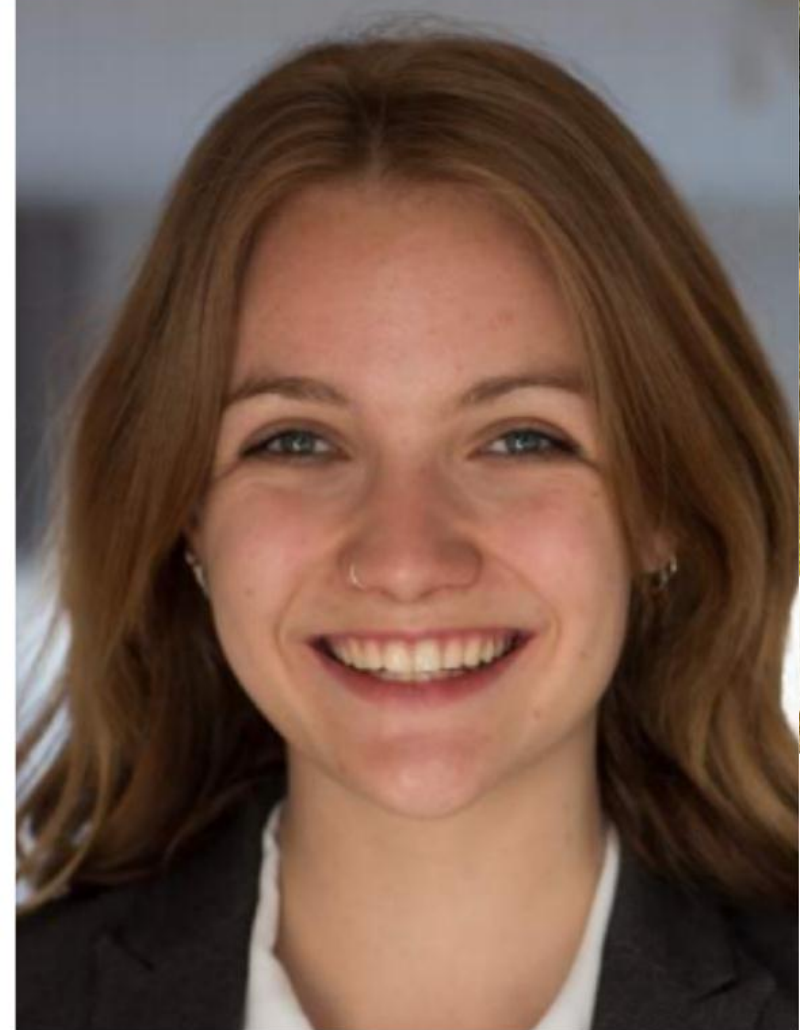


**Soon Mi van Dijk - Student Exchange
From Breda University of Applied Science, Netherlands 2020**

I chose the exchange program mainly because I knew that it would be fun and nice to work together with Indonesian people and learn more about their culture. Since I've been to Indonesia before, I already know that Indonesians are super friendly so that's definitely one of the reasons that I chose it because that way I knew for sure I would feel good at school. I really like the people of Indonesia and I think any country could be fun as long as the people are nice because making friends is the best. I can say that I did like working together with the people in my class!

STORY REVEAL

*#LSPRExploresTheWorld
Your International Journey
Starts Here at LSPR!*



**"I expected the Indonesian cultures will be very different from Europe and that's what I really got. The LSPR atmosphere is really lively, energetic, and a lot more open toward new students. The lecturer is helpful to accommodate us and also the friends in LSPR."
Johanna Pinn - Student Exchange From Hanze University of Applied Science, Netherlands 2019**

INTERNATIONAL RELATIONS & PARTNERSHIP OFFICE



Opening Hours and Contact Details:

Monday – Friday: 10:00 – 18:00

LSPR Communication and Business Institute
Sudirman Park Campus
RUKAN B-09 2nd Floor Sudirman Park (across
Skinholic)
Jl. K.H. Mas Mansyur Kav. 35
Jakarta Pusat 10220, Indonesia

Phone: 021-57942471 ext.305



081513053559



Ispriaac



Ispr.international



internationaloffice@lspr.edu



Communication &
Business Institute

The Leading Graduate School of Communication & Business

LSPR COMMUNICATION & BUSINESS INSTITUTE

Jakarta - Bekasi - Bali

LSPR Sudirman Park Campus, Sudirman Park
Jl. K.H Mas Mansyur, Kav. 35, Jakarta Pusat 10220
T: (+62) 021 – 5794 3751 / 5794 2471 / 61

LSPR Transpark Juanda Bekasi Campus
Jl. Ir. H. Juanda no 220, Duren Jaya, Bekasi Timur
T: (+62) 021 – 8269 1720

LSPR Renon – Bali Campus
Jl. Raya Puputan No. 140 Renon Denpasar, Bali
T: (+62) 0361 – 478 2227
Hotline: (+62) 8551838806 / (+62) 8551838807

lspir.edu

